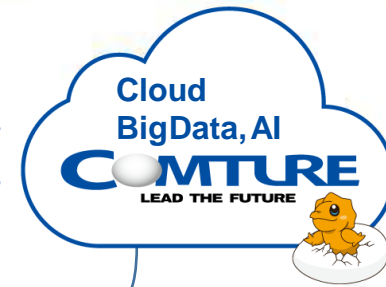


# Supplementary Materials for 1Q FY3/23 Financial Results for Institutional Investors

COMTURE CORPORATION

*Transforming needs  
into solutions*



July 2022

Chihiro Sawada  
President

# Financial Highlights

| (Thousands of yen)                     | FY3/2021(total) |            |            |            | FY3/2022(total) |            |            |            | FY3/2023(total) | YoY    |
|--|-----------------|------------|------------|------------|-----------------|------------|------------|------------|-----------------|--------|
|  | 1Q              | 2Q         | 3Q         | 4Q         | 1Q              | 2Q         | 3Q         | 4Q         | 1Q              | 1Q     |
| Net sales                              | 4,960,570       | 10,071,091 | 15,275,410 | 20,868,118 | 5,910,815       | 11,995,482 | 18,239,349 | 24,985,152 | 6,855,877       | +16.0% |
| Gross profit                           | 1,024,311       | 2,212,942  | 3,511,894  | 4,891,451  | 1,451,505       | 2,986,374  | 4,572,522  | 6,091,575  | 1,376,618       | △5.2%  |
| Operating income                       | 557,507         | 1,336,433  | 2,230,416  | 3,150,663  | 932,276         | 1,961,767  | 3,053,960  | 3,996,454  | 686,484         | △26.4% |
| Ordinary income                        | 560,996         | 1,375,025  | 2,269,073  | 3,192,492  | 929,515         | 1,965,461  | 3,052,726  | 4,000,300  | 681,249         | △26.7% |
| Profit                                 | 369,608         | 920,435    | 1,519,661  | 2,083,865  | 558,251         | 1,220,572  | 1,925,545  | 2,517,305  | 478,766         | △14.2% |
| Gross margin                           | 20.6%           | 22.0%      | 23.0%      | 23.4%      | 24.6%           | 24.9%      | 25.1%      | 24.4%      | 20.1%           |        |
| Operating margin                       | 11.2%           | 13.3%      | 14.6%      | 15.1%      | 15.8%           | 16.4%      | 16.7%      | 16.0%      | 10.0%           |        |
| Ordinary income margin                 | 11.3%           | 13.7%      | 14.9%      | 15.3%      | 15.7%           | 16.4%      | 16.7%      | 16.0%      | 9.9%            |        |
| Net income margin                      | 7.5%            | 9.1%       | 9.9%       | 10.0%      | 9.4%            | 10.2%      | 10.6%      | 10.1%      | 7.0%            |        |
| Net assets                             | 11,363,109      | 11,684,689 | 12,041,407 | 12,353,786 | 12,665,167      | 13,079,195 | 13,522,042 | 13,820,493 | 13,940,481      |        |
| Total assets                           | 14,687,871      | 15,421,282 | 15,215,254 | 16,483,565 | 16,778,836      | 17,196,219 | 17,561,086 | 18,934,062 | 18,796,722      |        |
| Total number of issued shares (Shares) | 32,241,600      | 32,241,600 | 32,241,600 | 32,241,600 | 32,241,600      | 32,241,600 | 32,241,600 | 32,241,600 | 32,241,600      |        |
| Net assets per share (Yen)             | -               | -          | -          | 387.60     | -               | -          | -          | 433.56     | -               |        |
| Net income per share (Yen)             | 11.60           | 28.88      | 47.68      | 65.38      | 17.52           | 38.29      | 60.41      | 78.97      | 15.02           |        |
| Ratio of shareholders' equity (%)      | 77.4            | 75.8       | 79.1       | 74.9       | 75.5            | 76.1       | 77.0       | 73.0       | 74.2            |        |
| Return on equity (%)                   | 3.3             | 8.1        | 13.1       | 17.7       | 4.5             | 9.6        | 14.9       | 19.2       | 3.4             |        |

# 5 segments Results

| (Millions of yen)          | FY3/21(total) |        |        |        | FY3/22(total) |        |        |        | FY3/23(total) | YoY    |
|----------------------------|---------------|--------|--------|--------|---------------|--------|--------|--------|---------------|--------|
|                            | 1Q            | 2Q     | 3Q     | 4Q     | 1Q            | 2Q     | 3Q     | 4Q     | 1Q            | 1Q     |
| <b>Net sales</b>           | 4,960         | 10,071 | 15,275 | 20,868 | 5,910         | 11,995 | 18,239 | 24,985 | 6,855         | +16.0% |
| Cloud Solution Business    | 1,995         | 4,037  | 5,962  | 8,063  | 2,244         | 4,627  | 6,838  | 9,485  | 2,447         | +9.0%  |
| Digital Solution Business  | 498           | 1,021  | 1,703  | 2,424  | 572           | 1,229  | 2,095  | 2,848  | 630           | +10.3% |
| Business Solution Business | 1,335         | 2,703  | 4,114  | 5,661  | 1,434         | 2,903  | 4,392  | 6,060  | 1,935         | +34.9% |
| Platform Solution Business | 1,086         | 2,186  | 3,315  | 4,486  | 1,170         | 2,366  | 3,704  | 5,104  | 1,337         | +14.3% |
| Digital Learning Business  | 44            | 122    | 179    | 233    | 489           | 869    | 1,208  | 1,486  | 504           | +3.1%  |
| <b>Cost of sales</b>       | 3,936         | 7,858  | 11,764 | 15,977 | 4,459         | 9,009  | 13,667 | 18,894 | 5,479         | +22.9% |
| <b>Gross profit</b>        | 1,024         | 2,212  | 3,511  | 4,891  | 1,451         | 2,986  | 4,572  | 6,091  | 1,376         | △5.2%  |
| Cloud Solution Business    | 410           | 880    | 1,352  | 1,863  | 569           | 1,164  | 1,744  | 2,436  | 546           | △4.1%  |
| Digital Solution Business  | 114           | 247    | 458    | 660    | 143           | 341    | 590    | 755    | 135           | △6.1%  |
| Business Solution Business | 255           | 553    | 880    | 1,272  | 311           | 664    | 1,001  | 1,344  | 295           | △5.0%  |
| Platform Solution Business | 254           | 529    | 817    | 1,085  | 284           | 581    | 910    | 1,183  | 241           | △14.9% |
| Digital Learning Business  | -10           | 1      | 3      | 9      | 142           | 234    | 325    | 371    | 157           | +10.7% |
| <b>Gross margin</b>        | 20.6%         | 22.0%  | 23.0%  | 23.4%  | 24.6%         | 24.9%  | 25.1%  | 24.4%  | 20.1%         |        |
| Cloud Solution Business    | 20.6%         | 21.8%  | 22.7%  | 23.1%  | 25.4%         | 25.2%  | 25.5%  | 25.7%  | 22.3%         |        |
| Digital Solution Business  | 22.9%         | 24.2%  | 26.9%  | 27.2%  | 25.2%         | 27.8%  | 28.2%  | 26.5%  | 21.4%         |        |
| Business Solution Business | 19.1%         | 20.5%  | 21.4%  | 22.5%  | 21.7%         | 22.9%  | 22.8%  | 22.2%  | 15.3%         |        |
| Platform Solution Business | 23.5%         | 24.2%  | 24.6%  | 24.2%  | 24.3%         | 24.6%  | 24.6%  | 23.2%  | 18.1%         |        |
| Digital Learning Business  | -22.6%        | 1.6%   | 2.0%   | 3.9%   | 29.1%         | 27.0%  | 26.9%  | 25.0%  | 31.3%         |        |

# Orders and Order Backlog

| (Millions of yen)                     | FY3/21(total) |        |        |        | FY3/22(total) |        |        |        | FY3/23(total) | YoY    |
|---------------------------------------|---------------|--------|--------|--------|---------------|--------|--------|--------|---------------|--------|
|                                       | 1Q            | 2Q     | 3Q     | 4Q     | 1Q            | 2Q     | 3Q     | 4Q     | 1Q            | 1Q     |
| <b>Orders</b>                         | 5,322         | 10,029 | 15,870 | 20,867 | 6,258         | 12,398 | 18,914 | 26,098 | 6,870         | +9.8%  |
| Cloud Solution Business               | 2,399         | 4,072  | 6,315  | 8,054  | 2,580         | 4,612  | 7,067  | 9,851  | 2,674         | +3.6%  |
| Digital Solution Business             | 556           | 1,087  | 1,921  | 2,575  | 558           | 1,258  | 2,169  | 2,880  | 644           | +15.5% |
| Business Solution Business            | 1,689         | 2,445  | 4,490  | 5,329  | 1,568         | 3,114  | 4,644  | 6,364  | 1,792         | +14.3% |
| Platform, Operation Services Business | 596           | 2,268  | 2,937  | 4,645  | 1,034         | 2,361  | 3,706  | 5,280  | 1,264         | +22.3% |
| Digital Learning Business             | 81            | 155    | 204    | 261    | 517           | 1,052  | 1,326  | 1,721  | 494           | △4.4%  |
| <b>Order backlog</b>                  | 4,479         | 4,695  | 4,310  | 5,053  | 5,295         | 5,272  | 5,107  | 5,958  | 5,923         | +11.9% |

※ The order backlog has been changed to the numerical value reflecting only the contribution of sales for the relevant fiscal year. (Order backlog at the end of the fiscal year will be the number of sales contribution only for the next term.)

# Balance Sheet Assets

| (Thousands of yen)                  | 1Q FY3/21  | 2Q FY3/21  | 3Q FY3/21  | FY3/21     | 1Q FY3/22  | 2Q FY3/22  | 3Q FY3/22  | FY3/22     | 1Q FY3/23  |
|-------------------------------------|------------|------------|------------|------------|------------|------------|------------|------------|------------|
| Current assets                      | 11,872,171 | 12,489,901 | 12,553,238 | 12,788,656 | 13,259,029 | 13,773,840 | 14,250,149 | 15,628,309 | 15,356,976 |
| Cash and deposits                   | 8,406,359  | 8,824,534  | 8,223,199  | 8,251,238  | 8,849,768  | 9,663,992  | 10,175,909 | 11,265,808 | 10,679,432 |
| Notes and accounts receivable-trade | 3,108,369  | 3,289,978  | 3,733,411  | 4,186,488  | 3,918,705  | 3,720,430  | 3,603,546  | 3,988,243  | 4,167,829  |
| Work in process                     | 124,257    | 88,869     | 149,589    | 88,103     | 146,048    | 126,530    | 193,286    | 107,385    | 129,322    |
| Other current assets                | 233,183    | 286,519    | 447,038    | 262,826    | 344,508    | 262,888    | 277,408    | 266,873    | 380,393    |
| Non-current assets                  | 2,815,700  | 2,931,381  | 2,662,015  | 3,694,908  | 3,519,807  | 3,422,378  | 3,310,936  | 3,305,752  | 3,439,745  |
| Property, plant and equipment       | 794,662    | 761,273    | 726,367    | 755,276    | 723,469    | 700,604    | 669,391    | 650,545    | 627,156    |
| Intangible assets                   | 110,415    | 90,057     | 68,665     | 947,714    | 897,227    | 844,596    | 810,478    | 819,175    | 782,718    |
| Investments and other assets        | 1,910,622  | 2,080,049  | 1,866,982  | 1,991,917  | 1,899,109  | 1,877,177  | 1,831,065  | 1,836,031  | 2,029,870  |
| Total assets                        | 14,687,871 | 15,421,282 | 15,215,254 | 16,483,565 | 16,778,836 | 17,196,219 | 17,561,086 | 18,934,062 | 18,796,722 |

# Balance Sheet Liabilities & Equity

| (Thousands of yen)                    | 1Q FY3/21  | 2Q FY3/21  | 3Q FY3/21  | FY3/21     | 1Q FY3/22  | 2Q FY3/22  | 3Q FY3/22  | FY3/22     | 1Q FY3/23  |
|---------------------------------------|------------|------------|------------|------------|------------|------------|------------|------------|------------|
| Current liabilities                   | 2,913,970  | 3,415,837  | 2,816,536  | 3,613,155  | 3,620,475  | 3,631,874  | 3,561,180  | 4,650,827  | 4,214,694  |
| Accounts payable-trade                | 883,227    | 933,653    | 1,009,375  | 1,038,873  | 1,126,841  | 994,685    | 1,118,746  | 1,230,335  | 1,290,743  |
| Short-term loans payable              | 200,000    | 200,000    | 200,000    | 500,000    | 500,000    | 200,000    | 200,000    | 200,000    | 340,000    |
| Provision for bonuses                 | 316,217    | 593,645    | 161,638    | 676,426    | 384,543    | 749,748    | 250,055    | 929,426    | 534,768    |
| Other current liabilities             | 1,514,524  | 1,688,539  | 1,445,523  | 1,397,856  | 1,609,091  | 1,687,441  | 1,992,379  | 2,291,066  | 2,049,183  |
| Non-current liabilities               | 410,792    | 320,755    | 357,309    | 516,623    | 493,192    | 485,149    | 477,862    | 462,741    | 641,545    |
| Asset retirement obligations          | 220,744    | 220,777    | 220,810    | 244,264    | 244,316    | 244,368    | 244,420    | 244,472    | 254,623    |
| Other non-current liabilities         | 190,047    | 99,978     | 136,499    | 272,359    | 248,876    | 240,781    | 233,442    | 218,269    | 386,922    |
| Total liabilities                     | 3,324,762  | 3,736,593  | 3,173,846  | 4,129,778  | 4,113,668  | 4,117,024  | 4,039,043  | 5,113,568  | 4,856,240  |
| Capital stock                         | 1,022,124  | 1,022,124  | 1,022,124  | 1,022,124  | 1,022,124  | 1,022,124  | 1,022,124  | 1,022,124  | 1,022,124  |
| Capital surplus                       | 3,602,597  | 3,617,017  | 3,617,017  | 3,617,017  | 3,617,017  | 3,631,281  | 3,631,281  | 3,631,281  | 3,631,281  |
| Retained earnings                     | 6,839,459  | 7,143,294  | 7,495,484  | 7,812,666  | 8,123,904  | 8,523,295  | 8,965,284  | 9,262,187  | 9,378,743  |
| Treasury shares                       | -111,089   | -109,368   | -109,368   | -109,368   | -109,368   | -107,323   | -107,323   | -107,323   | -107,323   |
| Valuation and translation adjustments | 10,018     | 11,621     | 16,149     | 11,346     | 11,489     | 9,817      | 10,675     | 12,223     | 15,656     |
| Subscription rights to shares         | 0          | 0          | 0          | 0          | 0          | 0          | 0          | 0          | 0          |
| Non-controlling interests             | 0          | 0          | 0          | 0          | 0          | 0          | 0          | 0          | 0          |
| Total net assets                      | 11,363,109 | 11,684,689 | 12,041,407 | 12,353,786 | 12,665,167 | 13,079,195 | 13,522,042 | 13,820,493 | 13,940,481 |
| Total liabilities and net assets      | 14,687,871 | 15,421,282 | 15,215,254 | 16,483,565 | 16,778,836 | 17,196,219 | 17,561,086 | 18,934,062 | 18,796,722 |

# Statement of Income

| (Thousands of yen)                               | 1Q FY3/21 | 2Q FY3/21  | 3Q FY3/21  | FY3/21     | 1Q FY3/22 | 2Q FY3/22  | 3Q FY3/22  | FY3/22     | 1Q FY3/23 |
|--|-----------|------------|------------|------------|-----------|------------|------------|------------|-----------|
| Net sales  | 4,960,570 | 10,071,091 | 15,275,410 | 20,868,118 | 5,910,815 | 11,995,482 | 18,239,349 | 24,985,152 | 6,855,877 |
| Cost of sales                                    | 3,936,259 | 7,858,148  | 11,763,515 | 15,976,666 | 4,459,310 | 9,009,107  | 13,666,827 | 18,893,576 | 5,479,258 |
| Gross profit                                     | 1,024,311 | 2,212,942  | 3,511,894  | 4,891,451  | 1,451,505 | 2,986,374  | 4,572,522  | 6,091,575  | 1,376,618 |
| SG&A expenses                                    | 466,803   | 876,509    | 1,281,478  | 1,740,787  | 519,228   | 1,024,607  | 1,518,561  | 2,095,121  | 690,133   |
| Operating income                                 | 557,507   | 1,336,433  | 2,230,416  | 3,150,663  | 932,276   | 1,961,767  | 3,053,960  | 3,996,454  | 686,484   |
| Non-operating income                             | 5,732     | 51,552     | 56,394     | 57,904     | 6,243     | 14,576     | 17,439     | 33,045     | 5,325     |
| Non-operating expenses                           | 2,243     | 12,960     | 17,737     | 16,075     | 9,005     | 10,883     | 18,673     | 29,198     | 10,560    |
| Ordinary income                                  | 560,996   | 1,375,025  | 2,269,073  | 3,192,492  | 929,515   | 1,965,461  | 3,052,726  | 4,000,300  | 681,249   |
| Profit before income taxes                       | 559,477   | 1,373,506  | 2,265,924  | 3,108,266  | 850,486   | 1,853,792  | 2,910,779  | 3,786,482  | 767,390   |
| Income taxes                                     | 189,869   | 453,071    | 746,262    | 1,024,400  | 292,235   | 633,220    | 985,233    | 1,269,176  | 288,624   |
| Profit attributable to non-controlling interests | 0         | 0          | 0          | 0          | 0         | 0          | 0          | 0          | 0         |
| Profit attributable to owners of parent          | 369,608   | 920,435    | 1,519,661  | 2,083,865  | 558,251   | 1,220,572  | 1,925,545  | 2,517,305  | 478,766   |

# Stock Information

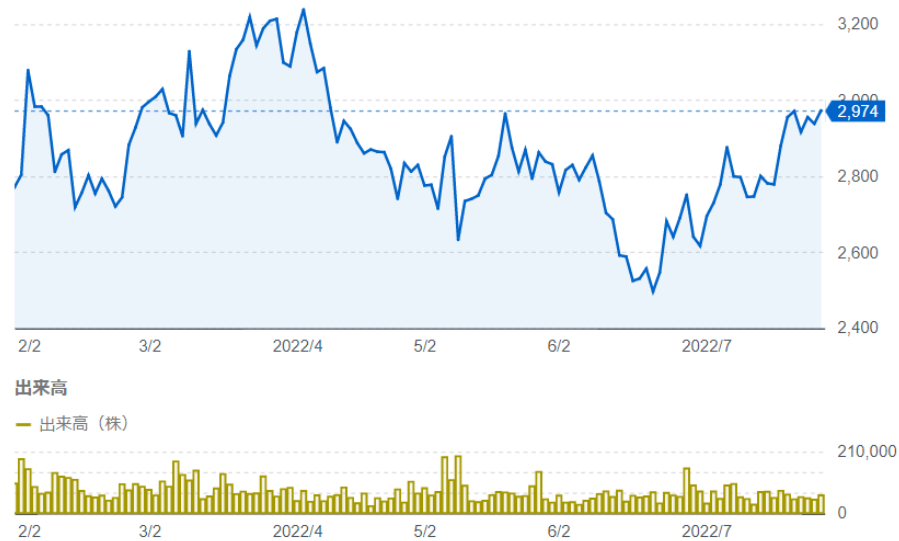
## Stock status

(As of June 30, 2022)

Total number of authorized shares **104,400,000** shares

Total number of issued shares (common stock) **32,241,600** shares

Number of shareholders (common stock) **6,882**



## Shareholder composition

|                        | 30-Sep-21           |                    |                     | 31-Dec-21           |                    |                     | 31-Mar-22           |                    |                     | 30-Jun-22           |                    |                     |
|------------------------|---------------------|--------------------|---------------------|---------------------|--------------------|---------------------|---------------------|--------------------|---------------------|---------------------|--------------------|---------------------|
|                        | No. of shareholders | No. of shares held | Shareholding ratios | No. of shareholders | No. of shares held | Shareholding ratios | No. of shareholders | No. of shares held | Shareholding ratios | No. of shareholders | No. of shares held | Shareholding ratios |
| Financial Institutions | 17                  | 5,564,300          | 17.3%               | 19                  | 6,015,100          | 18.7%               | 16                  | 6,055,000          | 18.8%               | 16                  | 6,193,900          | 19.2%               |
| Security firms         | 25                  | 264,902            | 0.8%                | 25                  | 300,019            | 0.9%                | 25                  | 320,011            | 1.0%                | 28                  | 407,854            | 1.3%                |
| Other entities         | 38                  | 6,613,187          | 20.5%               | 36                  | 6,609,204          | 20.5%               | 40                  | 6,613,014          | 20.5%               | 35                  | 6,645,709          | 20.6%               |
| Foreign entities, etc. | 175                 | 11,404,221         | 35.4%               | 165                 | 11,379,216         | 35.3%               | 169                 | 11,255,359         | 34.9%               | 169                 | 10,930,925         | 33.9%               |
| Individuals and others | 6,626               | 8,030,230          | 24.9%               | 6,068               | 7,572,911          | 23.5%               | 6,412               | 7,633,066          | 23.7%               | 6,633               | 7,695,122          | 23.9%               |
| Treasury shares        | 1                   | 364,760            | 1.1%                | 1                   | 365,150            | 1.1%                | 1                   | 365,150            | 1.1%                | 1                   | 368,090            | 1.1%                |
| Total                  | 6,882               | 32,241,600         | 100.0%              | 6,314               | 32,241,600         | 100.0%              | 6,663               | 32,241,600         | 100.0%              | 6,882               | 32,241,600         | 100.0%              |



# Precautions

- This presentation was prepared to provide information about COMTURE and is not a solicitation to invest in COMTURE.
- COMTURE exercised care regarding the accuracy of information in this presentation but does not guarantee that this information is complete.
- COMTURE assumes no responsibility whatsoever concerning any losses or damages resulting from the use of information in this presentation.
- Forecasts and other forward-looking statements in this presentation are based on the judgments of COMTURE using information that was available when this presentation was prepared and incorporate risks and uncertainties. As a result, actual performance may differ significantly from the forward-looking statements in this presentation due to changes in market conditions or many other reasons.

## Inquiries

Investors Relations, Corporate Planning Department

COMTURE CORPORATION

Tel: +81-(0)3-5745-9702

E-mail: [ir-info@comture.com](mailto:ir-info@comture.com)

